

# SAINTFIELD HIGH SCHOOL

2024  
PROSPECTUS



# PRINCIPAL'S WELCOME

On behalf of Saintfield High School's Board of Governors, members of staff, pupils and their families, thank you for your interest in our thriving learning community. We hope this Prospectus gives you an informative and exciting insight into all of our educational experiences, and an understanding of our ethos which promotes personalised learning for all of our students.

Saintfield High School was founded in 1958, and we are extremely proud of our key position at the very heart of the community. It has been our absolute privilege to serve the village and wider area for over sixty-five years.



**S-L Hynds, Principal**

We are honoured to work alongside all of our outstanding feeder primary schools who we enjoy wonderfully positive relationships with, and who work closely with us to ensure your child's move from primary to post-primary education is a smooth and enjoyable transition.

Saintfield High School is committed to taking the best of new innovations to enrich each child's learning journey, while strengthening the foundations of strong values and traditions, in addition to championing all those essential skills that we know lead to educational excellence.

The learning experiences our pupils enjoy are broad and diverse, and we ensure that each and every child completes an individual educational journey with us from Year 8 through to Year 12. Our reputation for exceptional pastoral care, high academic standards and our comprehensive programme of extra-curricular provision continues, and in 2024, the Saintfield High School learning community is prouder than ever of all the successes we share.

We are strongly supported by all of our parents, carers and families, and we enjoy effective, authentic community partnerships. Collaboration is at the core of all that our school continues to aspire to achieve, and we actively promote pupils' voices and a vibrant curriculum that reflects real world issues and challenges.

Saintfield High School has a highly motivated, talented and professional team of teaching and non-teaching staff that is dedicated to ensuring

the holistic education of each pupil. They inspire our pupils every day to achieve their true potential, and to become fulfilled members of the workforce, their community, and society in general.

We continue to be an extremely popular choice for those pupils transitioning to post-primary school, and the level of demand for places at Saintfield High School is testament to the high quality education we provide.

While the following pages will give you a flavour of the value of our learning opportunities, and the high expectations and aspirations that we expect from ourselves and our pupils, no prospectus could ever convey completely the positive atmosphere that permeates through our school, or the quality of relationships that we enjoy in our day-to-day school life.

A very warm welcome will always await you at Saintfield High School.

We look forward to meeting you.

**S-L Hynds**

For further information, please visit our website, [www.saintfieldhighschool.com](http://www.saintfieldhighschool.com), where you can also access our ETI inspection reports which will provide you with a further in-depth analysis of our high quality educational provision.



# MISSION:

**Saintfield High School, together with the community we serve, celebrates personalised learning in a safe, caring and stimulating environment.**

## Aims:

The primary aim of Saintfield High School is:

To develop a safe, harmonious and well structured school community, in which staff and pupils work together with mutual respect in the pursuit of "success for all" pupils.

To achieve this primary aim, our learning community has five subsidiary aims:

1. To promote the spiritual, moral, emotional, cultural and physical development of each pupil;
2. To provide a broad, balanced and relevant curriculum enabling each pupil to contribute positively to society in the 21st Century;
3. To foster a positive, caring environment and develop attitudes through which individuals may learn respect from others and become responsible members of society;
4. To establish a creative and secure educational partnership between the school, the home and the wider community;
5. To promote self-esteem, well-being, confidence and self-discipline among all pupils within an inclusive learning community.

## PLEDGE:

**Individual "success for all" pupils - learning and achieving together.**



# STAFF 2023 - 2024

## PRINCIPAL

**Miss S-L Hynds**, MA(Hons), MA, PGCE, MEd, PQH (NI), AoEA Associate

## VICE-PRINCIPAL

**Mrs V Derby**, BEd (Hons), MEd

## SENIOR TEACHERS

**Mrs R Bradley**, BA (Hons), PGCE  
**Mr M Carter**, BSc (Hons), PGCE, PQH

**Mrs D Artt**, BA (Hons), PGCE  
**Miss S Bicker**, BTh (Hons), PGCE  
**Miss E Bingham**, BA (Hons) PGCE  
**Mrs H Birt**, B Mus, PGCE  
**Mr D Bolton**, BEd (Hons)  
**Mrs D Cheshire**, BA (Hons), PGCE  
**Mr S Chisholm**, BSc (Hons), PGCE  
**Mrs S Convill**, BA (Hons), PGCE  
**Mrs J Cooper**, BEd (Hons)  
**Mrs Jill Crowe**, BSc (Hons)  
**Mrs L Cullen**, BA (Hons), PGCE  
**Mrs A Dempsey**, BSc (Hons), MSc, PGCE  
**Mr M Elliott**, BA (Hons), PGCE, DIS  
**Mrs R Elliott**, BSc (Hons), PGCE, PGDip SEN, CCET, AAT, BPS  
**Mrs H Ewart**, MA (Hons), PGCE  
**Miss L Henderson**, BEd (Hons)  
**Mrs K Hume**, BSc, PGCE  
**Mrs L Jackson**, BSc (Hons), PGCE, MSc  
**Miss M Kirk**, BSc (Hons) PGCE  
**Mr C McCracken**, BA (Hons), PGCE  
**Miss K Montgomery**, BEd (Hons)  
**Miss A Mullen**, BEd  
**Mr M Murphy**, BSc (Hons), PGCE, MEd, CCET, AAT  
**Mrs S Teague**, BA (Hons), PGCE, DASE

## ADMINISTRATION

**Mrs S Craig**  
**Mrs R McGreevy**  
**Mrs V McMordie**  
**Mrs C Payne**

## LABORATORY TECHNICIAN

**Mrs L McClurg**

## I.C.T. TECHNICIAN

**Mr R Cully**

## BUILDING SUPERVISORS

**Ms I Leckey**  
**Mr D Mageean**

## BOARD OF GOVERNORS:

**Chair** Mr W J Dick      **Secretary** Miss S-L Hynds

Mr D Beattie | Mrs E Campbell | Mr R Edwards | Mr L Fergus | Mr N Gibson  
Mr J Megraw | Miss A Mullen | Mr G Murphy

## CLASSROOM ASSISTANTS

**Miss L Beattie**  
**Miss L Booth**  
**Mr J Bunting**  
**Mrs H Cash**  
**Mrs R Edmonds**  
**Miss R Fitzsimons**  
**Mrs C French**  
**Miss A Graham**  
**Mrs C Gurr**  
**Mrs N Hobson**  
**Miss A Johnston**  
**Mrs B Jones**  
**Ms C Maude**  
**Mr J Moore**  
**Miss C McClure**  
**Mrs R McCulla**  
**Mrs D McKnight**  
**Ms H Montgomery**  
**Miss J Ross**  
**Mrs L Sloan**  
**Miss R Smyth**  
**Ms L Telford**  
**Miss C Walsh**  
**Miss G Watters**  
**Ms I Zawisza**



**W J Dick**, Chair, Board of Governors

## HEAD GIRL **Jo-Anne Allison**

I still recall the first time I ever stepped inside Saintfield High School. It was the school's Open Evening back in January 2019, and I was instantly impressed. Everyone I met – the teachers, the pupils, everybody – were so warm and kind and encouraging. I was overwhelmed by the reception I received that night. I walked away from the school knowing that Saintfield High School was the kind of place where I wanted to be.

Starting off was scary. That September, I was a small Year 8 girl surrounded by seemingly hundreds of bigger kids. However, I very quickly settled in and I was blown away by how supportive and welcoming everyone was, staff and students alike. I was constantly encouraged to work hard and to achieve my best, and I was able to do that thanks to the unwavering support of my teachers.

That isn't to say I found every single subject to be easy. However, I have been fortunate to have the support of dedicated members of staff guiding me and supporting my learning every single step of the way. The teachers and classroom assistants made it easy to ask for help when I was struggling, and really took their time to help me understand whatever we were working on.

Away from schoolwork, the staff in Saintfield High School have consistently shown how much they care for the pupils' overall wellbeing. Whenever I, or any of my classmates, have experienced any difficulties in our lives, I can honestly say, hand on heart, that the staff have been so compassionate, caring and supportive.

I am proud of how much I have been able to thrive academically during my time in this remarkable school, and I know a large part of that is due to the help of my teachers. They consistently showed me support and provided encouragement, and that has helped me to progress so much in my learning.

Primary 7 pupils, by the time you start your journey at Saintfield High School, I will have left. I know, however, that I will be able to cope with whatever comes my way next thanks to the wonderful five years I have spent in this fantastic school.

## HEAD BOY **Robbie Douglas**

I have loved my time at Saintfield High School, and I hope that you have the same positive experience of this incredible school that I have had.

I can hardly believe that I am in my last year and will be moving on to somewhere new! It really doesn't seem that long ago that I was a Primary 7 pupil, visiting Saintfield High School's Open Evening in 2019. From that night, I knew this was the place for me.

When I started, I was the only boy who transferred from my primary school, and I must admit to being worried about making friends. However, I quickly made some amazing friends, and together we have made countless unforgettable memories that I will always treasure.

Some of my favourite memories from school come from participating in a wide range of extracurricular activities. I think that Saintfield High School truly is a fantastic and inclusive school – covering activities from the Duke of Edinburgh Award Scheme to a massive range of musical performances and sporting teams.

I have been lucky enough to represent the school on various sports pitches in contests against other local schools, and I have recently completed my Bronze Duke of Edinburgh Award (which involved several nights of camping in the Mourne Mountains!) and I am currently working towards my Silver Award - there really is something for everyone here!

I am studying for my GCSEs this year and I can honestly say that my teachers work so hard to prepare and support everyone for their examinations. Geography field trips, for example, have helped me to gain knowledge in the classroom and apply it to the real world. I also enjoy the practical side of working in the labs for Science and Agriculture and Land Use.

Saintfield High School is a great school community, and it has been a privilege to be part of this over the past five years. As Head Boy, I am incredibly proud to tell people that I am a student at Saintfield High School. I would like to wholeheartedly encourage all Primary 7 pupils reading this to make the same choice that I did. I know you won't regret it – I certainly didn't!

Primary 7s, I would strongly encourage you to consider choosing Saintfield High School as your post-primary option. You will thrive here and be pushed to accomplish the best grades that you are capable of throughout your time here. I wholeheartedly hope that you follow in my footsteps and become a pupil of this wonderful, joyful and, frankly, exceptional school – you won't regret it!





# PUPIL WELL-BEING

## at Saintfield High School

### PARENTS/CARERS - OUR PARTNERSHIP WITH YOU

At Saintfield High School all members of staff, both teaching and non-teaching, are partners with you, our parents and carers, in your child's education. We value a vibrant Parent Panel which provides parental/carer insight into a range of policies and processes. We believe that a pupil's education is enhanced when parents and carers, alongside teachers, share common objectives. A strong, genuine and meaningful partnership between school and home creates a sense of shared purpose and cements a desire to ensure pupils 'thrive not

just survive'. We will greatly value the part you play in guiding our Year 8 pupils along the path of success, and we also greatly appreciate our existing parents' and carers' support of all of our policies, and the way in which they nurture our children to take a real pride in attending this thriving learning community. We never take for granted the support of our parents and carers.

***Nurturing and challenging  
pupils to thrive***



# PUPIL WELL-BEING ORGANISATION

At Saintfield High School, Pupil Well-being means every pupil is valued and well looked after. We want all of our pupils to feel happy, safe and content at school.

On enrolment at our school, all pupils are allocated to a tutor group, and our experienced Form Tutors will assist with your child's/children's pastoral induction into Year 8.

At Saintfield High School we strongly advocate that 'children should thrive not just survive'. All members of staff, both teaching and non-teaching, work tirelessly to ensure the holistic development of every single pupil within the school community.

The team of staff who provide overall pastoral care and who monitor attendance and academic progress include:

## THE FORM TUTOR

Each Form Tutor has specific responsibility for pupils in their Form Class and is the main point of contact for parents and carers. Form Tutors monitor academic progress and exercise pastoral care of the students in their Form Class. If pupils have any concerns they may talk to their Form Tutor. The role of Form Tutor is vital to the efficient running of the school, successful pastoral care, and the delivery of a range of programmes throughout the academic year.

## HEADS OF SCHOOL

The Head of Early School, Mrs Hume, has specific responsibility for all students in Year 8. Our Head of Junior School, Mrs Elliott, has specific responsibility for all classes in Years 9 and 10. Our Head of Senior School, Mrs Bradley, has specific responsibility for all classes in Years 11 and 12. They liaise with Form Tutors, parents and carers, a range of external agencies, the Vice-Principal and Principal in all matters pertaining to Pupil Well-being.

## THE VICE-PRINCIPAL

Mrs Derby is our Vice-Principal, and within her role as Head of Pupil Well-being, she provides support to all members of staff in implementing Saintfield High School's pastoral policies and procedures. Mrs Derby oversees the implementation of the Resilience Curriculum and strives to ensure all pupils are provided with a breadth of support, guidance and provision throughout their educational journey at Saintfield High School.



**MICAH McMASTER**  
Year 8

## PARENT YEAR 9

*"My daughter followed her older brother into Saintfield High School last year. I had no doubt that this was the school for her, given how happy and content my son is. Being one of the youngest in her Year, it amazed me how much she has flourished and been given the space to develop in her creativity and talents, especially with the school choir. She has made lots of new friends and will let nothing get in the way of her maintaining her 100% attendance record. It really has been the making of her, and as a family, we could ask for nothing more".*

I was quite nervous before I started Year 8 back in September, but I needn't have worried! Everyone at Saintfield High School has been so welcoming. It feels very different here from Primary School, but in a good way. I really enjoy changing teachers and classrooms several times a day, and trust me – after the first week, you won't get lost any more! I think my favourite subjects are Science, Home Economics and Technology and Design. I love these subjects most because we get to do lots of practical tasks!



*"We were absolutely thrilled to be awarded the Investors in Mental Health Award 2022. This is a tribute to all staff who work tirelessly to ensure the emotional and mental well-being of all pupils in this school community." - Mrs Derby*

### **LEARNING SUPPORT CO-ORDINATOR**

Mr Murphy is our Learning Support Co-ordinator. Mr Murphy ensures those pupils on the Special Educational Needs (SEN) register receive the requirements of their statutory educational plans and are supported and guided throughout their educational journey to ensure they achieve 'personal success'.

### **SAINTFIELD HIGH SCHOOL'S ADDITIONAL AND SPECIAL EDUCATIONAL NEEDS PROGRAMME**

The progress of all pupils is monitored throughout the year through a process of formal testing, assessment, reviews and reports. Our aim is to ensure that prompt intervention strategies are put in place when deemed necessary. Specialist teachers are involved in supporting teaching and learning in the classroom. Our aim is to maximise the learning opportunities for all of our pupils. Pupils identified as having a Special or Additional Educational Need will benefit from Personalised Learning Plans drawn up according to the recommendations of their Statement of Educational Need. The School follows the requirements of the Special or Additional Educational Need Code of Practice.

### **COMMUNITY CODE OF CONDUCT**

Saintfield High School's Community Code of Conduct is our policy to promote positive behaviour within our learning community, and to outline all of our procedures relating to student behaviour and attitude. We want all of our pupils to be happy and feel safe in their school life, and we recognise that a harmonious environment at school and classroom level is key to effective learning and teaching. We believe that a clear, shared understanding of our school's values is a prerequisite for the effectiveness of our behaviour policy.

At Saintfield High School, we seek to encourage the development of self-discipline with mutual respect for others. Abundant opportunities are provided for children to be engaged in worthwhile activities where such development can take place, and positive discipline is always encouraged. When behaviour is unacceptable there is a need for restoration, and our school rules and discipline procedures are included in our Community Code of Conduct Policy.

Our school code of behaviour was drawn up in consultation with members of staff and pupil representatives from our Student Voice Association, as well as the school's Parent/Carer Panel.

### **STUDENT VOICE**

Our Student Voice provides a clear platform for pupils from all year groups to express their opinions, beliefs and perspectives on a range of issues and topics relating to their education. We greatly value all the contributions our pupils make to the organisation and running of our learning community. It is so important that we listen carefully to pupils – their opinion truly matters.

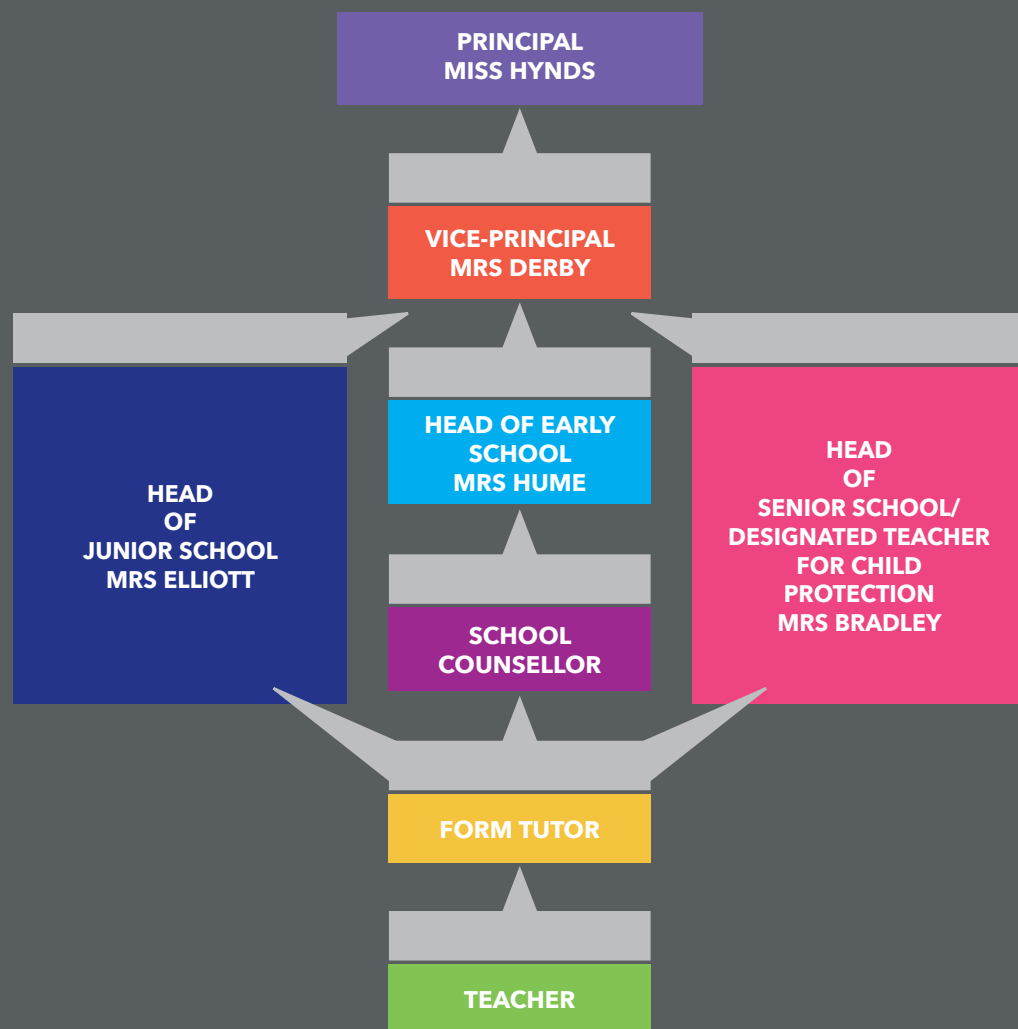
### **PASTORAL SUPPORT**

At Saintfield High School we firmly believe that every child has the right to learn, and every member of staff has the right to work in, an atmosphere free from fear and intimidation. We do not tolerate any form of bullying, and we are proactive about educating our children to always discuss anything that is worrying them. Our pupils know who to speak with and who to turn to if they ever have any concerns about school life. Our pastoral lines of communication are illustrated in the diagram opposite:



## COUNSELLING

A key element of the pastoral provision at Saintfield High School involves our counsellor, Mrs O'Higgins. Mrs O'Higgins is in school each Wednesday and is available to speak with any pupil. The School Counsellor plays a crucial role in promoting pupil well-being by providing a listening ear and wise counsel. This service provides an opportunity for pupils, across all year groups, to discuss and reflect upon their thoughts, feelings and emotions within a safe and respectful environment.



Since starting Saintfield High School last year, I have made so many great friends. I love coming to school to see them every day. Lots of my friends are in the school choir, and singing and performing are my favourite things to do at school! We sing at school events, such as Open Evening, and even get out into the community to perform as well. I really enjoy working with my Music teacher, Mrs Birt, and I am lucky that she is my Form Tutor as well!



**EVA CROSKERY**  
Year 9

## MRS DOUGLAS

Parent of Head Boy

*"I feel incredibly grateful that my son attends Saintfield High School. The move from primary to post primary can be an anxious time but the staff at Saintfield High work exceptionally hard to ensure the transition is made as smooth as possible.*

*Throughout the years I have been very impressed with the academic support and pastoral care in this school. It is evident that the teaching staff continually strive to encourage all pupils to reach their full potential in a caring and supportive environment.*

*I have watched my son grow in confidence over these last five years and I know that he will be sad to leave such a wonderful school. I would highly recommend Saintfield High School to any parent or child."*

# SAINTFIELD HIGH SCHOOL'S RESILIENCE CURRICULUM

## THROUGHOUT YEARS 8-12

All pupils will embark upon a pastoral journey which seeks to provide preventative education through our Resilience Curriculum. We want to prepare our pupils for the exciting opportunities, as well as the challenges, which they will face in adulthood. Within our school community, we appreciate not only the importance of pupils' physical well-being, but also acknowledge that their mental and emotional well-being is of equal value, especially for the current generation of children.

We seek to equip our pupils with resilience and the ability to manage their physical and mental health in a positive manner, especially when the challenges of life are all too apparent. Throughout the year, we discuss, reflect upon, and consider mental well-being and the implications mental health can have upon pupils' lives and families. It is hoped such a proactive approach will assist pupils in preparation for their future.

## THE PUPIL RESILIENCE CURRICULUM INCLUDES:

- Anti-Bullying Workshops
- Smoke/Vape Prevention Programme
- Drug Awareness Support Sessions
- 'Good Manners Matter' Programme
- Internet Safety Training
- 'Love for Life' Programme
- 'Made for More' Resilience Workshops
- Mental Health Programmes
- Self-esteem and confidence seminars
- 'Mood Matters'
- Pastoral Support Sessions
- Resilience Module
- Road Safety - Translink Safety Bus
- School Counsellor
- Suicide Prevention Programme
- Examinations support and guidance
- The Blues Programme
- Healthy Relationships

## Child Protection Procedures

In line with the Department of Education Northern Ireland, Saintfield High School has a duty to refer disclosures of a child protection nature to the appropriate statutory agencies.

If any parents and carers have concerns about the safety of their (or another) child they can inform various members of staff, including:

- Mrs Bradley, who is the Designated Teacher for Child Protection;
- Mrs Convill, who is the Deputy Designated Teacher for Child Protection (in the absence of Mrs Bradley) or
- Miss Hynds, the Principal.

Reporting back on the progress and conclusion of a concern will be by the Designated Teacher dealing with the issue. Other avenues open to parents and carers if they remain dissatisfied with the outcome, is first to refer the matter to the Principal, if she has not yet been involved, or second, to refer the matter to the Chair of the Board of Governors. The chart on the opposite page illustrates the process.

### MRS ALLISON

Parent of Head Girl

*"Moving to a new school is daunting for any parent and child and no more stressful at a time of Covid and shielding during lock down. Saintfield High School was a natural choice for us as a family with their reputation of excellent pastoral care. This was an important factor in our choice and we were not disappointed. The school have a holistic approach to pupil well-being. I have watched my daughter grow and mature through the most difficult periods of her life. She has grown in confidence, self-assurance and is able to interact and socialise with her peers and elders. I am proud that she is now Head Girl of Saintfield High School and this has allowed for me, now as a single parent, to be assured that she will be ready for adulthood and her future working life."*

1

I have a concern about my/a child's safety

2

I can talk to the Form Tutor

3

If I am still concerned, I can talk to the Designated Teacher for Child Protection, Mrs Bradley (or the Deputy Designated Teacher for Child Protection, Mrs Convill, in her absence)/School Counsellor/Vice-Principal, Mrs Derby

4

If I am still concerned, I can talk to the Principal - Miss Hynds

5

If I am still concerned, I can talk/write to the Chair of the Board of Governors

6

At any time, I can talk to Social Services or the PSNI

## SCHOOL PASTORAL POLICIES

Saintfield High School's pastoral policies are in place to safeguard all of our children and are regularly reviewed.

They include:

Anti-Bullying, Child Protection, Community Code of Conduct, Drug Prevention, Period Dignity, Health and Safety, Pupil Well-Being, Diversity and Inclusion, and Social Media.

Copies are available on our website,  
**[www.saintfieldhighschool.com](http://www.saintfieldhighschool.com)**



**Mrs V Derby, Vice-Principal**





SAINTFIELD HIGH SCHOOL'S  
CURRICULUM FOR EXCELLENCE

# At Saintfield High School we strive to ensure that every single pupil achieves their full potential.

There are many strands which contribute to our '**Curriculum for Excellence**'.

These include:

- Our delivery and development of a broad and balanced curriculum through effective and vibrant **learning and teaching** including additional support in literacy and numeracy;
- Our tracking and **monitoring of pupil progress**;
- Our **careers support and guidance**, and of course;
- Our **strong and robust wrap around pastoral care provision**.

We have in place a dynamic and thorough assessment schedule for all year groups, which fuels our 'Pupil Progress Check' system. The progress of our pupils is monitored very carefully and parents and carers will receive two reports annually – a Progress Report and an Annual Report (or Mock Examinations Report for Years 11 and 12).

## MRS PEDLOW

Parent Year 8

*"We have experienced a very positive transition from a small local primary school into Saintfield High School. The nurturing school environment and pastoral care has had a significant impact on my son's personal and academic development. It has played a vital role in making him feel supported and confident as he navigates the new experiences in post primary education. Saintfield High goes above and beyond to foster an inclusive culture, where all pupils are made to feel valued."*



ELLIE TATE  
Year 10

## The School Curriculum

### KEY STAGE THREE

The curriculum for Years 8-10 enables each pupil to realise their true potential at Key Stage Three. Children are given the opportunity to excel in a range of subject areas, and are supported fully during these important school years.

During Years 8, 9 and 10, pupils will have the opportunity to study the following subjects:

- **Art and Design • English**
- **Food Science and Nutrition • French**
- **Geography • History**
- **Information and Communication Technology**
- **Life and Work**
- **Mathematics • Music**
- **Physical Education**
- **Religious Education • Science**
- **Technology and Design**

I have recently joined the Student Voice Association – this is a brilliant way to share all of our ideas. Recently, I took part in anti-bullying and mental health workshops. I did not think I would ever be confident enough to present to my peers. I am so proud of myself! I think Saintfield High School is amazing!





## KEY STAGE FOUR

The curriculum for Years 11 and 12 is determined by core subjects, which are compulsory, and a selection of subjects which are chosen by pupils at the end of Year 10. At Saintfield High School, we continually review and revise our Key Stage Four curriculum so that it fully meets the interests and aptitudes of our pupils. We offer GCSE and Level 2 programmes of study.

The following are our core subjects:

- GCSE English Language
- GCSE Mathematics
- GCSE Learning for Life and Work
- Religious Studies
- Careers Guidance
- Physical Education

The following subjects are currently offered to pupils in Years 11 and 12:

- Agriculture and Land Use
- Art and Design
- Business and Communication Systems
- Creative Arts and Digital Technologies
- Digital Technology
- English Literature
- Food and Nutrition
- French
- Geography
- Health and Social care
- History
- Music
- Motor Vehicle and Road User Studies
- Occupational Studies - Design and Creativity, Environment and Society
- Physical Education
- Prince's Trust
- Single Award Science
- Double Award Science
- Technology and Design

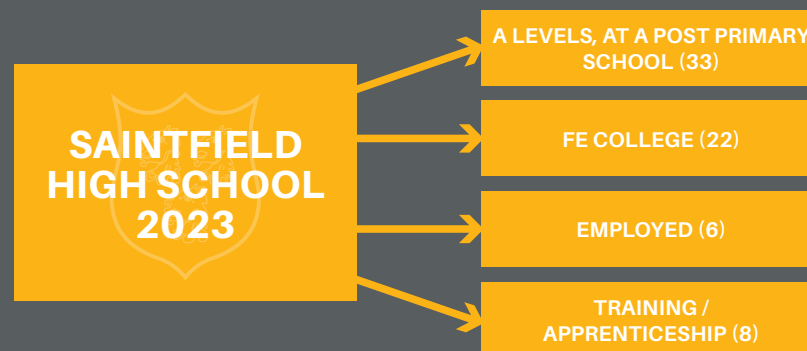
## PUPIL ACHIEVEMENTS

At Saintfield High School, we are extremely proud of all that our pupils achieve, through their studies, and through their pursuits outside of the classroom. The importance of examinations for entry to higher and further education and employment cannot be overlooked. Results for external examinations have been of a consistently high standard over many years within the school. It is our policy that all pupils attempt to complete qualifications in the fullest range of subjects possible at GCSE level and other Level 2 options.

*'Our high standards of learning and teaching continue to bring rewards. Last year's Year 12, who completed their education at Saintfield High School in June 2023, achieved an impressive set of GCSE results, which reflect their individual success. We are simply delighted that 82% of our pupils in 2023 achieved five or more GCSE grades at A\*-C, with 65% of all pupils achieving five or more GCSE grades at A\*-C, including English and Mathematics. Additionally, each and every pupil left having developed a wide range of skills in sport, music and a variety of extra-curricular interests, and indeed social skills'.*

**S-L Hynds**

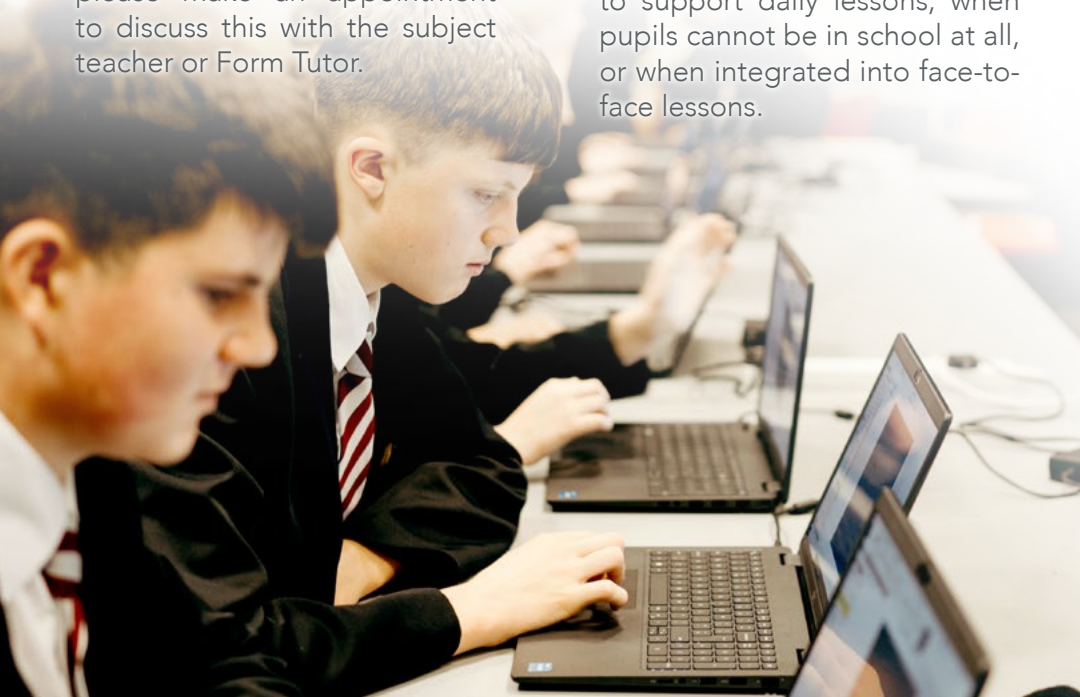
Principal





## HOME LEARNING

Parents and carers are encouraged to ensure that each week day evening, one to two hours is spent on uninterrupted study. This will cover specific tasks given by subject teachers, extra studies, research work, and much needed revision. This is necessary if work completed in class is to be adequately reinforced and developed. There is a relatively uniform distribution of home learning activities throughout the week. Parents and carers should always endeavour to provide a quiet space with reasonable facilities for home study. If at any point in your child's educational journey your child experiences any difficulties with home learning, please make an appointment to discuss this with the subject teacher or Form Tutor.



## INTEGRATION OF VIRTUAL LEARNING PLATFORMS

The last few academic years have seen our school community implement various platforms for our pupils to learn online, and remote learning continues to play a significant role in the educational provision we provide for our young people. Google Classroom is used extensively throughout school to digitally organise, distribute and collect assignments, share interesting materials, and communicate effectively and innovatively with pupils about their classwork. Our teachers continue to develop a wide range of strategies to support effective remote learning, whether this be for home study to support daily lessons, when pupils cannot be in school at all, or when integrated into face-to-face lessons.

## CAREERS EDUCATION, INFORMATION, ADVICE AND GUIDANCE



Careers education plays a significant role in the full development of our pupils.

The aim of the Careers Team is to provide information on, and knowledge of, a wide range of career paths, and to enhance pupils' awareness of their achievements, skills, qualities and capabilities.

Routine careers advice is offered to all pupils in Years 11 and 12 with the emphasis being on helping them to make their own decisions in life.

The expertise of our teaching staff is supplemented by the Careers Advisor from the Department for the Economy, who visits the school weekly to give any practical help necessary. A wide range of careers talks and visits involving a variety of

outside agencies and companies provide a vibrant and dynamic addition to the careers curriculum.

Our Year 11 pupils will have the opportunity to experience a wide variety of industrial sectors through an "Experiences of Work Week". Pupils will engage directly with local employers in a programme tailored to meet the individual needs and interests of every pupil.

Our Year 12 pupils also take part in simulated interviews which are an invaluable opportunity to gain experience of interviewing for the world of work. Importantly, our Year 10 pupils begin the process of personal career planning through the Learning for Life and Work curriculum which is continued into Senior School, in addition to designated careers time.



# YEAR 8 PUPILS...

## WHAT DO YOU LOVE ABOUT SAINTFIELD HIGH SCHOOL?

"I love playing Hockey! I had never played it before I came to Saintfield High School but now it is my favourite sport!"

Mabel Lewis, 8BK

"One of my favourite things is History class. We have been learning about the Normans. It is so interesting and enjoyable."

Andrew Cooke, 8BK

"The thing I like most about Saintfield High School are the lunchtime clubs because there is always something fun to do. My favourite club is Scripture Union."

Junia Johnson, 8HU

"I really love playing rugby in PE"

Reuben Jordan, 8HU

"I love playing Hockey for the school team. We get to play against other schools and I always feel very proud to represent Saintfield High School."

Emma Morrison, 8HU

"My favourite thing at Saintfield High School is baking in Home Economics. Yummy!"

Rosalie Floyd, 8MY

"One thing I really love about Saintfield High School is Science. We get to do loads of cool experiments."

Corey Breen, 8HU

"I love playing for the school Football Team!"

Joel Skelly, 8MY

"I like that it is easy to find my way around. I was worried about getting lost before I started here, but it hasn't been difficult at all."

Sophie Gregg, 8MY

"I sing with the school choir and it is brilliant. We have performed at so many events already. I love it."

Jessica Williamson, 8HU

"The thing I love most about Saintfield High School is the cafeteria – they always have something good to eat!"

Bethany Martin, 8MY

"Art and Design is my favourite subject at Saintfield High School. I love the Art room and all the wonderful Art materials that we get to work with!"

Amy Hanvey, 8MY

"Something I enjoy about life at Saintfield High School is getting the bus to and from school with my friends!"

Alisa Flanigan, 8HU

"I love hanging out and chatting with my friends at lunchtime. I have made some great friends since I started Saintfield High School."

Kaileagh Rea, 8HU

"One thing I really enjoy about Saintfield High School is getting to move about the school during the day, going to different classrooms and working with different teachers."

Harry Lambe, 8MY

## A collage of 15 photographs showing students in various school activities, including sports, arts, and social events, displayed on a tablet screen. The photos are arranged in a grid-like fashion on a white tablet with a silver home button. The activities include: a group of students sitting around a table with a banner that says 'GET OUR HANDSET'; a student running on a green field; two students working on a project; a student in a red apron working at a table; a student on a blue scooter; a student using a camera; a student working on a project; a student sitting at a desk; a student working on a project; a student sitting at a desk; a student working on a project; a student sitting at a desk; a student working on a project; and a group of students wearing Santa hats.

We have a wide range of clubs, societies and extra-curricular activities on offer within the school, which run after scheduled lessons and during leisure time, including:

- ## LUNCHTIME CLUBS

- 17



# SPORT

## at Saintfield High School

### Saintfield High School's Sporting Aims

Sport and physical activity are important parts of every pupil's week at Saintfield High School, helping to develop their physical, social and mental well-being. Our Physical Education curriculum for our Year 8 pupils is extensive, aiming to give our children a flavour of a range of sporting activities.

Weekly dedicated Physical Education classes are supplemented by an extensive range of after-school activities, involving inter-school matches, and weekly clubs. The School is a member of the North Down School Sports Association, competing regularly in interschool football, hockey, basketball and athletics competitions.

The school's sporting aims are: -

1. To promote a healthy lifestyle amongst all pupils;
2. To help pupils acquire new sporting skills;
3. To help pupils to maximise their sporting potential;
4. To assist pupils to make informed decisions about their health throughout the rest of their lives;
5. To improve pupils' self-esteem and confidence;
6. To promote the value of teamwork;
7. To have fun in a safe environment.







## SPORTS FACILITIES

The school has access to a wide range of sporting facilities, which include a state-of-the-art sports hall, a gymnasium, two grass football pitches, an outdoor gym, community centre and a full-size Astroturf hockey pitch. We also have strong links with local sporting clubs, including Saintfield Hockey and Cricket Clubs, Saintfield Striders Running Club, Saintfield United Football Club, Ballynahinch Rugby Club, Naomi Orr School of Dance and Ulster GAA.



# MUSIC AND PERFORMING ARTS

at Saintfield High School

Saintfield High School supports a vibrant and enthusiastic Music and Performing Arts Department



This Department aims to offer diverse experiences to each pupil both inside and outside of the classroom. Both Music and Performing Arts are available to study at Key Stage Four, and the school has recently introduced the delivery of the OCN NI Level 2 Creative Arts and Digital Technologies.

All pupils have the opportunity to learn to play a musical instrument and tuition is available in woodwind, brass and guitar, to name but a few disciplines. Pupils are prepared for grade examinations with various, appropriate examination boards.

The Music and Performing Arts Department places great emphasis on extra-curricular activities and pupils are encouraged to take part in all of these. We are extremely proud of our Saintfield High School Choir and Band, and other ensembles.

Each year, our Choir and Band undertake a full and challenging programme with performances at our annual day of 'Celebrating Success', our Open Evening, and various other after-school events and concerts. Our musicians also contribute regularly to many community and charity events.

Our Music and Performing Arts Department continues to flourish!







## COMMUNITY COLLABORATION

It is our vision for the future that Saintfield High School becomes even more community focused, as it continues to serve the village and wider area. Our staff and pupils are fully committed to involvement in community activity, and we strive to strengthen links with a range of outside and neighbouring agencies, businesses, organisations, and local people.

At Saintfield High School, we believe the answer to real education and school transformation is strong, authentic, community connections and actions. We take great pride in our reputation as a school at the heart of our community, with an open and welcoming atmosphere. We host annual activity days and variety concerts for the community and recognise how vitally important it is that our pupils experience and understand the rich connections between our school and society.

## CULTURAL AWARENESS AND

Noah – My classroom assistant has been a great help to me during my time at Saintfield High School. I have especially appreciated her help this year as I have begun my GCSE courses. I love attending Saintfield High School. Everyone here is so friendly and helpful. I'm really glad that I get to be in the same Form Class as my brother, Jude!



NOAH CUNNINGHAM & JUDE CUNNINGHAM  
Year 11

## FUNDRAISING

During the school year fundraising is organised regularly, with many local and national charities receiving significant donations as a result of our pupils' hard work, and the generosity of parents, carers and the wider community. The pastoral philosophies which underpin our school community promote, encourage and foster the development of empathy, compassion and understanding. Our work in supporting charities exemplifies this commitment to others.

For the academic year 2022-23, a total of £6,413.35 was raised and donated to a number of worthy causes, including the British Red Cross, Children in Need and Cancer Fund for Children. Additionally, we continued to support Kilmore and Inch Parish Church, who work in collaboration with Christians Against Poverty (CAP), by making and delivering food hampers in the lead up to Christmas.

Through these activities, our learning community finds that by giving, there is a great deal to be gained.

Jude – I have really enjoyed starting my GCSEs this year. It is brilliant to get to spend more time in my favourite subjects, such as Art, History and Double Award Science. The work isn't always easy but my teachers really help me to understand each topic that we study.

# GIRLS

**Blazer:** A black blazer with School badge

**Skirt:** Grey - length NOT shorter than midway between end of blazer and knee

**Shirt:** White with Junior or Senior School tie

**Jumper:** Official School 'V' neck jumper (compulsory November - February inc.)

**Shoes:** Plain black, low heeled, soft soled School shoes (no fashion shoes, trainers or pumps)

**Tights:** Black tights

**Coat:** Official school outdoor coat

**Scarf:** Official School scarf

**Bag:** Plain black with reflector markings, no handbag style

## Summer Term

In the summer term a short-sleeved white shirt may be worn with tie.

# BOYS

**Blazer:** A black blazer with School badge

**Trousers:** Black

**Shirt:** White with Junior or Senior School tie

**Jumper:** Official School 'V' neck jumper (compulsory November - February inc.)

**Socks:** Grey or black

**Shoes:** Plain black, soft soled School shoes (not gym shoes or boots)

**Coat:** Official school outdoor coat

**Scarf:** Official School scarf

**Bag:** Plain black with reflector markings

## Summer Term

In the summer term a short-sleeved white shirt may be worn with tie.

# UNIFORM





# PHYSICAL EDUCATION UNIFORM



## GIRLS

**Skort:** Black games skort

**Top:** Maroon polo shirt and black zipped sports top with school crest

**Socks:** Maroon long sports sock with three black bands

**Coat:** Official school outdoor coat with school crest

**Trousers:** Black tracksuit bottoms with school crest

**Gym Shoes:** White with non-marking sole. Shin pads and gum shield are recommended.

## BOYS

**Shorts:** Black two tone soccer short

**Top:** Maroon polo shirt and black zipped sports top with school crest

**Socks:** Maroon long sports sock with three black bands

**Coat:** Official school outdoor coat with school crest

**Trousers:** Black tracksuit bottoms with school crest

**Gym Shoes:** White with non-marking sole, and football boots. Shin pads and gum shield are recommended.





# CHARGING AND REMISSIONS



## CHARGING AND REMISSIONS

- The Education Reform (Northern Ireland) Order 1989 retains a general commitment to the concept of free education for all pupils throughout the period of compulsory schooling. However, Saintfield High School's Board of Governors suggest an annual voluntary contribution of £60 per pupil and/or £80 per family to a School Fund designed to support a wide variety of curricular and non-curricular activities in Years 8 - 12. Ingredients for cooking in our Food Science and Nutrition classes is purchased by the school, and parents and carers are requested to contribute a voluntary annual payment of £20 to cover all associated costs for Years 8-10.

In addition, a voluntary annual payment of £20 is requested to cover the material costs for children in Years 8-10 to participate in the practical elements of Technology and Design.

- All teaching of subjects prescribed in the Northern Ireland Curriculum is given free of charge to parents and carers, as are all entries for public examinations offered by the school and taken by pupils for the first time; a charge will be made for those pupils who wish to resit examinations. There will, however, be a full cost to parents and carers for the re-marking of external examinations.
- On occasion, there may be charges made for the transport of pupils representing the school, although not for team games, inter-school quizzes, community service or musical events.
- Additionally, charges are made when parents and carers indicate in advance a wish to own a finished product, for example, for ingredients, materials and/or components used within practical areas of the curriculum like Food Science and Nutrition or Technology and Design. Similarly, when parent/carers have agreed to their child's participation in a residential trip which takes place mainly outside school hours, charges are made to cover the costs involved. Optional activities organised by the school which require charges to be made, require the written consent of parents/carers before their children are permitted to participate in them.

### MR ANDERSON

Parent Year 11

*"Our experience of Saintfield High School has been one of a school which provides a very supportive environment for our children, where the leadership and teaching staff are fully engaged in prioritising their learning and welfare."*

I have nearly finished my time at Saintfield High School, and I have to admit I am little nervous about my final exams coming in May and June. However, I know that my teachers have prepared me well and that they genuinely want the best for me and all of my classmates. The teachers in this school are great. I feel blessed to have such fantastic people helping me.

OCEAN WEBSTER  
Year 12

# TRANSFER PROCEDURE 2024

Admissions will be determined by a designated sub-committee of the Board of Governors, which shall include the Principal. The Board of Governors reserves the right to require such supplementary evidence as it may determine to support or verify information on the Transfer Application.

You may be required to present verification documents after your child has been offered a place at the School, at the sole discretion of the Board of Governors. Original documents are required and not digital copies or photocopies. The provision of false or incorrect information or the failure to provide verifying documents according to the required deadline may result in either the withdrawal of a place or the inability of the school to offer a place.

In the event of the school being over-subscribed, a pupil will be admitted according to the following criteria, applied in the order set down:

- 1** Children who have a child of the family\* currently enrolled at the school (applicants should record on the Transfer Application the name of the child and date of enrolment at the school), or children whose parent/carer is a permanent employee of the school.
- 2** Children who have had a child of the family\* who attended the school. Applicants should record on the Transfer Application the name of the child and date he/she left Saintfield High School.
- 3** Children who are the eldest child(ren) of the family\* (where applicable, twins (or other multiples) will be treated as joint eldest), or the first child of the family to transfer to a non-selective school (verification may be required) and who attends a traditional contributory primary school (see list of feeder schools below).

Academy, Saintfield	Carryduff	Killyleagh
Alexander Dickson	Cedar Integrated	Knockbreda
Anahilt	Comber	Millennium Integrated
Andrews Memorial	Derryboy	Moneyrea
Ballynahinch	Downpatrick	St Mary's, Comber
Cairnshill	Drumlins Integrated	Spa
Carr	Glasswater	
Carrickmannon	Killinchy	

- 4** Children who attend a feeder/named primary school (see list of schools above) and who list Saintfield High School as their first preference post-primary school on the Transfer Application.
- 5** All other children.

If, following the application of the above criteria in order, there comes a point where there are more children who meet a particular criterion than there are spaces available, priority will be given to children:

- a) Who list Saintfield High School as their first preference post-primary school then;
- b) For whom Saintfield High School is the nearest suitable school as measured by the Ordnance Survey web distance measurement tool.

\*Child of the family as defined in DE Circular 2023/15 The Procedure for Transfer from Primary to Post Primary Education, Annex 2, Paragraph 4.

When considering which children should be selected for admission, the Board of Governors will only take into account information which is detailed on, or attached to the Transfer Application, relating to the set criteria. Parents/carers should therefore ensure that all information pertaining to their child and relevant to the school's admissions criteria, is stated on the Transfer Application or attached to it.





### YEAR 8 WAITING LIST

Applicants who did not gain a place in Saintfield High School as part of the transfer procedure will automatically be placed in rank order upon the school’s admissions waiting list after 1 September 2024.

Should a place become available after 1 September 2024, priority will be given to those applicants who have named Saintfield High School as their first preference post-primary school. In the event of a place becoming available, the School will contact the applicant’s parent/carer to arrange an interview with the Principal or Vice-Principal. New applications for Year 8 will be added to the waiting list in rank order after applying the admissions criteria.

At the end of Year 8, the school will contact all applicants’ parents/carers on the waiting list to determine whether they wish to remain on the waiting list. Those applicants wishing to remain on the waiting list will be dealt with according to the criteria listed in Admission to Saintfield High School other than at the Customary Transfer Stage.

### ADMISSION DETAILS

YEAR	APPLICATIONS RECEIVED	APPROVED ENROLMENT	TOTAL ADMISSIONS
SEPTEMBER 2020	112 APPLICATIONS	72*	81
SEPTEMBER 2021	94 APPLICATIONS	72*	81
SEPTEMBER 2022	114 APPLICATIONS	92*	104
SEPTEMBER 2023	127 APPLICATIONS	96*	103

**\*INCREASED TEMPORARY APPROVED ENROLMENTS**  
**TOTAL ADMISSIONS INCLUDES STATEMENTED CHILDREN**



# 2024

**SAINTFIELD HIGH SCHOOL**

21 Comber Road, Saintfield BT24 7BB T 02897 510356

E [info@saintfield.saintfield.ni.sch.uk](mailto:info@saintfield.saintfield.ni.sch.uk) W [www.saintfieldhighschool.com](http://www.saintfieldhighschool.com)

[T](#) @SaintfieldHigh [I](#) @officialsaintfieldhighschool [F](#) SHSTransfer2024

